

People with Records and the Formerly Incarcerated in the Chicago Area

The Human Capital Imperative

Disinvestment

Chicago area provides the least amount of service per low-income person.

Mass Incarceration

Approximately 40% of the people leaving Illinois prisons end up in Chicago, and most are concentrated in seven neighborhoods with the highest levels of poverty, violence and unemployment in the city**



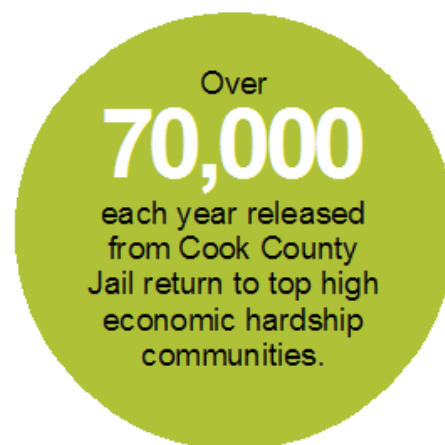
Almost
70%
are ages
22 to 24.



57.9%
African Americans
make up the majority
of those incarcerated.



60%
African Americans
make up the majority
of those on parole.



SOURCE:***"Human Services as an Economic Engine: How Human Services in Illinois Drive Jobs and Economic Benefits" Illinois Partners for Human Service (May 2016). ** "Released Inmates Face Roadblocks Adjusting to Society," Urban Institute, "Chicago Communities and Prisoner Reentry"; "Job Barriers for People with Criminal Records under Scrutiny."

Mass Incarceration

RELEASE DATA

(State FY14, County FY12) show projections of people with criminal records returning to ZIP codes.

Communities	IDOC Releases FY14	Cook County Jail Releases FY12
Englewood (60636, 60621)	882	3,510
North and South Lawndale (60608,60623,60632)	2,324	2,325
East and West Garfield Park (60612, 60624)	1,079	2,277
Humboldt Park and Austin (60651, 60644)	1,385	2,201

RECIDIVISM RATES

Communities	Recidivism Rates (any new arrest)	Recidivism Rates (crime of violence)
Englewood	83%	34.1%
North and South Lawndale	78%	29.9%
East and West Garfield Park	80.2%	24.1%
Humboldt Park	77.9%	27.9%
Austin	84.1%	30.4%
Chicago	73%	30.2%

Getting to the Root Causes

Mass incarceration and community disinvestment are the root causes of the poverty, unemployment and violence we are seeing in Chicago.

High Economic Hardship Communities	Population, 2014	Violent crime rate per 1,000 people, past month	VCR yr est.	Violent Crime Reports past year	Violent crime rate per 1000 people, past year	% Below Poverty	% Unemployed
West Englewood	34,272	2.7	32.4	896	26.1	32.3	34.7
Englewood	27,297	3.1	37.2	844	30.9	42.2	21.3
North Lawndale	35,623	2.3	27.6	1108	31.1	38.6	18.5
South Lawndale	72,881	0.5	6	591	8.1	28.1	11.5
East Garfield Park	20,262	3.2	38.4	607	30.0	39.7	16.4
West Garfield Park	18,894	3.8	45.6	719	38.1	40.3	25.2
Humboldt Park	54,515	1.8	21.6	901	16.5	32.6	12.3
Austin	99,711	2.1	25.2	2020	20.3	27.0	21.0

SOURCE: High Economic Hardship Communities, Source: Healthy Chicago 2.0

Population Estimates Source: Chicago Metropolitan Agency for Planning (CMAP) Community Data Snapshots, <http://www.cmap.illinois.gov/data/metropulse/community-snapshots>

Violent Crime iSource: The Chicago Tribune, Crime and Chicagoland, Violent crime data, <http://crime.chicagotribune.com/>.

Violent crime Reports past year, Source: Chicago Police Department Crime Summary, past 365 days (as of July 6, 2016), http://gis.chicagopolice.org/website/clearMap_crime_sums/viewer.htm?SUMTYPE=COMM&SUMCATA=VIOL&SUMTIME=365

“Before Safer, I stayed in trouble because my environment and the people I stayed around were not a good influence. Going into Safer, I realized that I had more potential than I was portraying. Now I am in a position to succeed in my life, and provide for my family as a new father.”

JAVONTAE MORGAN-SMITH, AGE 18
Youth Empowerment Program, Safer Foundation
A resident of Chicago’s Southwest Side

After being convicted on a robbery case, Javontae came to Safer Foundation in December 2014 to complete his GED, a condition of his probation. In January 2015, Javontae received his GED and shortly after enrolled at the Art Institute of Chicago to pursue an applied science degree (A.A.S.) in Culinary Arts. Javontae, who became a new father in May 2016, will receive his associate's degree in September.